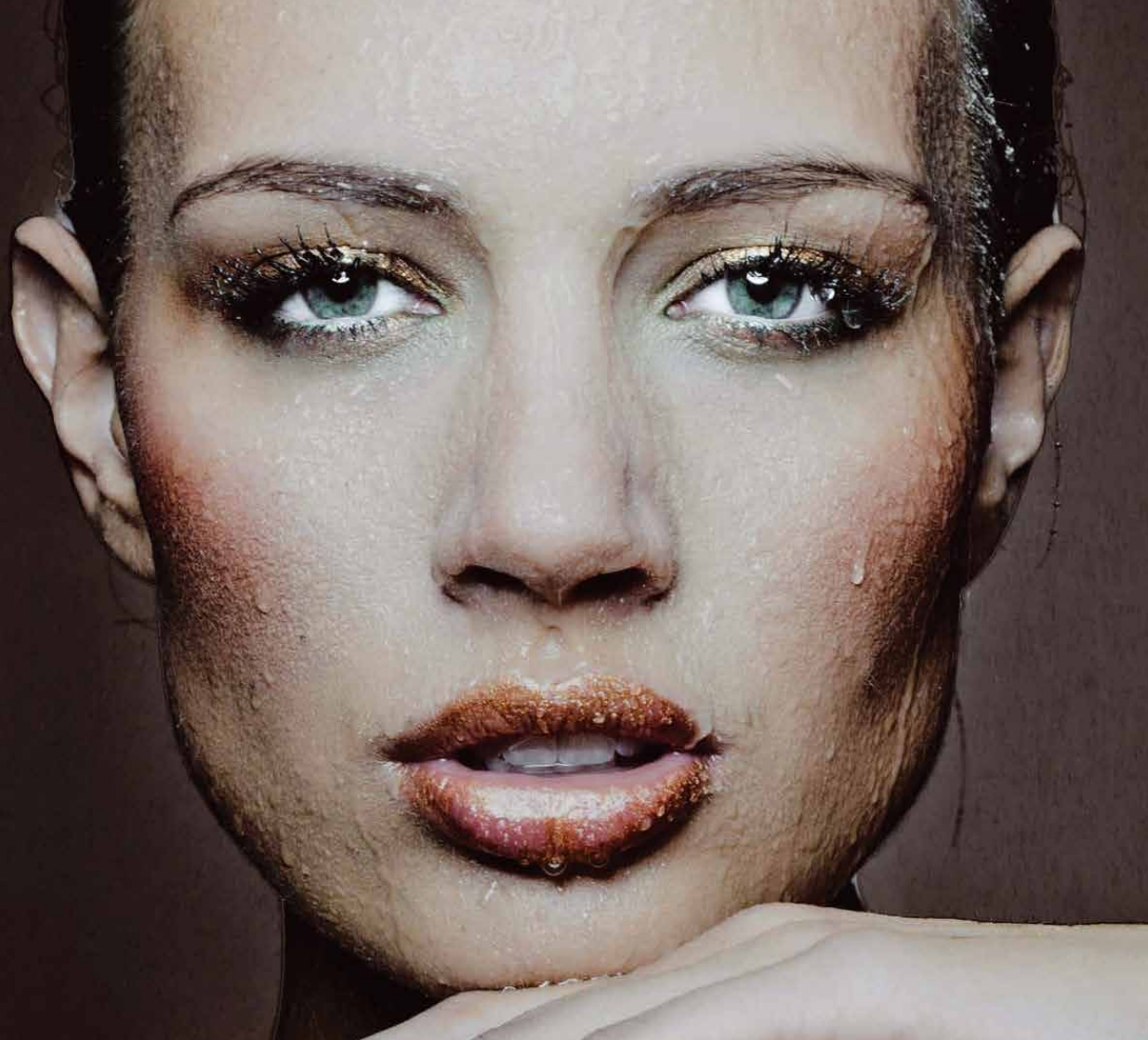




ELLIPSE



BEAUTY



*We provide high end,  
luxury treatments*

Ellipse Beauty was established in Jersey in 2011 with the aim of providing high end luxury treatments that really work.

We have a small team of passionate, highly trained therapists who are specialists in their chosen fields of beauty and cosmetic skin care. Along with top of the range equipment, the Venus Swan and Ellipse Superlight+.

We also offer state of the art solarium tanning with top of the range German Sunbeds by Ergoline.



## Tanning

### SOLARIUM

Pay as you go per minute

30 mins

60 mins

90 mins

(packages expires 18 months from date of purchase)

### ST TROPEZ SPRAY TAN

Full Body

Half Body

£1

£27

£54

£75

£30

£18

## Lash Extensions

Full Set

Half Set

Infills

Removal

£70

£50

£35

£10

## Tinting / Brows

Eyelash Tint

Eyebrow Tint

Lash and Brow Tint

High Definition Brows

£17

£11

£24

£35

## Waxing

Ellipse uses Harley chocolate and lavender hot wax for all facial and intimate waxing. With Harley wax you can expect more than just a wax. You can expect a nourishing skin treatment that will remove hairs up to 1mm long for smoother, longer lasting results. The Harley chocolate wax contains only the finest ingredients, essential oils and titanium dioxide. Titanium dioxide waxes are a new generation of professional waxes suitable for use on very sensitive areas and skins.

Eyebrow Shape

Lip Wax

Chin

Underarms

Standard Bikini

Extended Bikini

G String

Brazilian

£11

£11

£11

£11

£12

£15

£20

£30

Hollywood

Full Leg and Bikini

Half Leg

Full Leg

Full Arm

Back

Chest

Buttocks

£32

£40

£20

£32

£25

£30

£30

£15



## *Manicure*

Jessica Shape and Polish	£15
Jessica Express Manicure	£20
Jessica Luxury Manicure	£40
Splash of Citrus Peel Manicure	£55
Juicy Apple Peel Manicure	£55
Pampered Pumpkin Peel Manicure	£55

## *Pedicure*

Jessica Shape and Polish	£15
Jessica Express Pedicure	£25
Jessica Luxury Pedicure	£45
Splash of Citrus Peel Pedicure	£60
Juicy Apple Peel Pedicure	£60
Pampered Pumpkin Peel Pedicure	£60

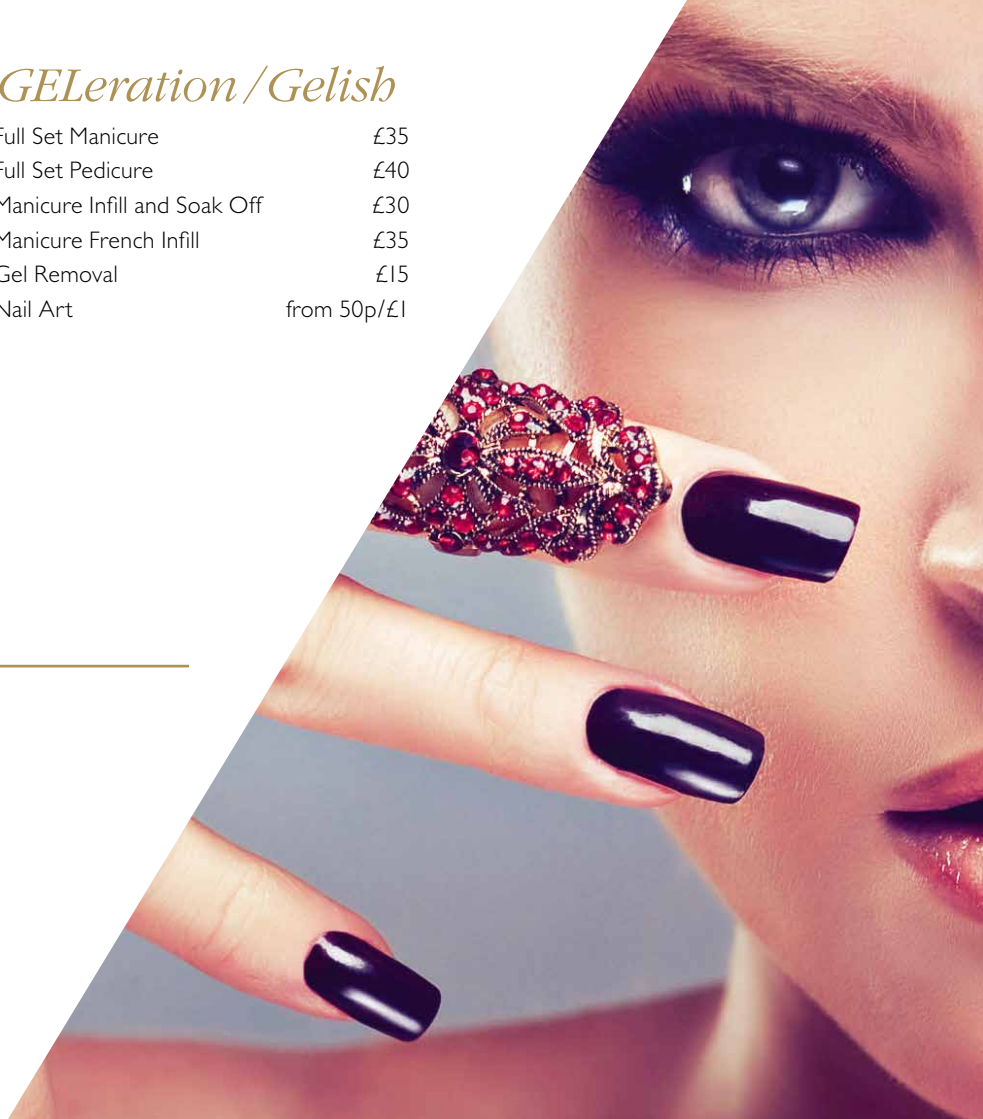
---

## *Massage*

½ hr Back, Neck and Shoulder	£35
45 min Back Neck and Shoulder	£48
Full Body Massage	£55
45 min Indian Head Massage	£40
Anti-ageing Massage Upgrade	£75
Blemish Fighting Back Treatment	£80

## *GEleration / Gelish*

Full Set Manicure	£35
Full Set Pedicure	£40
Manicure Infill and Soak Off	£30
Manicure French Infill	£35
Gel Removal	£15
Nail Art	from 50p/£1





# *HydroPeptide Facials*

Peptides are a buzzword in anti-ageing skin care for their performance and appropriate application for all skin types, even sensitive skin. They offer an effective and stable alternative to retinol treatments, where sensitive skin can be reactive. All HydroPeptide Products are paraben, phthalate and cruelty free.

## WHAT ARE PEPTIDES?

Peptides are short chains of amino acids (or protein fragments) that act as cellular communicators to signal the skin to act in a healthier, younger way. Protein is the 2nd most abundant molecule in the body, and is essential for nearly every process within cells. 25-35% of the body's protein content is made up of collagen, as well as other proteins such as elastin. These are proteins that decline with time that peptides can reactivate as they naturally stimulate them in the skin, smoothing out fine lines and wrinkles, plumping and firming the skin, giving it a more youthful appearance.

## HOW IS HYDROPEPTIDE DIFFERENT?

HydroPeptide incorporates many key ingredients that play a multi-performance role in helping the skin appear more youthful. Our 62 peptides are just one class of ingredients shown to visibly improve the skin. We also include multisided hyaluronic acid, growth factors and a broad range of powerful antioxidant rich botanical stem cells. The variety of peptides and other ingredients work to strengthen and nourish the skin so it can behave and act more youthful.



## *Anti-Stress Express Facial* £55

Refresh and rejuvenate without irritation or sensitivity. Enzymes and peptides keep skin perfectly nourished, antioxidants protect, and hyaluronic acid infuses optimal hydration. A brightening treatment mask provides the right amount of exfoliation all year round and when less exfoliation is desired.

### BENEFITS

After just one treatment, skin is hydrated, renewed and smoother

### WHO'S IT FOR?

All skin types in need of light exfoliation and quick results.

## *Re-Fueling Men's Facial* £85

Correct the first signs of ageing and extract impurities with this signature men's treatment. Gently exfoliate, un-clog pores, protect, and even out skin tone with vitamin C, fruit enzymes, and a variety of antioxidants. Peptides and growth factor activators will increase elasticity and firmness of the skin, while delivering proper nourishment.

### BENEFITS

Smooth out roughness and irritation from razor burn while extracting impurities and absorbing toxins.

### WHO'S IT FOR?

Fine lines and wrinkles, dry/dehydrated, dull/tired skin types.

## *Advanced Resurfacing Facial* £95

Give your exfoliation routine a professional boost with this instant resurfacing treatment that leaves skin smooth and refreshed with no down time. Six botanical stem cells work to protect from external stresses while peptides rejuvenate and revitalize. Combine the best of science and nature to achieve age defying results.

### BENEFITS

After just one treatment skin feels smoother, looks brighter and is energized. Wrinkles and lines are less visible.

### WHO'S IT FOR?

Fine lines and expression lines, dull, rough skin.

## *Brightening Facial* £90

Even out, lighten and brighten many types of skin discolouration including age spots, sun damage, acne scars and pregnancy mask. This brightening treatment will help to address pigmentation concerns without the use of harsh chemicals by combining proven natural skin brighteners with gentle exfoliation. A potent dose of antioxidants helps to protect the skin while a targeted serum jump starts a more even complexion.

### BENEFITS

After just one treatment, skin is radiant, more even, smooth and toned. A series of treatments is recommended for best results.

### WHO'S IT FOR?

Hyper pigmentation, sun damage, acne scars, pregnancy mask, age spots and dull uneven skin tone.



## *Calming Recovery Facial* £85

Even sensitive skin will be left glowing after this calming, soothing treatment. A gentle blueberry mask helps to protect skin and restore hydration. Start combating sensitivity with peptides and a botanical stem cell that helps to promote an even skin tone by reducing visible signs of redness. An uplifting eye treatment gives that perfect finish to this gentle restorative treatment.

**BENEFITS:** After just one treatment, skin is calm, refreshed and more balanced.

### **WHO'S IT FOR?**

Sensitive, sensitized, coupe rose and impaired barrier skin.

## *Peptide Infusion Facial* £90

HydroPeptide's signature facial. This relaxing "no downtime" treatment infuses the skin with the restorative and uplifting benefits of peptides, growth factors, and proteins. The treatment begins with a two step peel that incorporates vitamin C infused micro-dermabrasion crystals and a plumping activator to reveal fresh, glowing skin. A hybrid treatment mash purifies with bentonite and kaolin clays, while wrinkle fighting peptides leave skin firm and rejuvenated. Fine lines and wrinkles don't stand a chance with this signature age defying treatment.

### **BENEFITS**

After just one treatment, expression lines appear relaxed, skin is clear and glowing, texture is smoother and skin is plumped.

### **WHO'S IT FOR?**

Fine lines and wrinkles, dry/dehydrated, dull / tired, all skin types to prevent and repair the signs of ageing.

## *Pumpkin Refresher Facial* £85

This clarifying power boost provides effective exfoliation to combat break out, and acne skin types, while revitalizing hyper-pigmented sun damaged skin. A combination of salicylic acid and an acne fighting peptide work synergistically to clear the skin of impurities while natural exfoliants increase cell turnover to lift signs of sun exposure and leave skin looking fresh and renewed.

### **BENEFITS**

After just one treatment, skin is clearer, smoother and glowing.

### **WHO'S IT FOR?**

Acne, photodamage, dull skin, wrinkles.

## *Acne Clarifying Facial* £85

Improves skin clarity while combating acne and unbalanced skin. A combination of salicylic acid and acne fighting peptides improve skins smoothness and balance oil production. Unclog pores and speed up skin cell turnover while enhancing an overall glow and revealing healthy skin.

### **BENEFITS**

After just one treatment skin is balanced, revitalized and clear.

### **WHO'S IT FOR?**

Acne, unbalanced complexion, photodamage, dull complexion.



# IPL Hair Removal

## LADIES

### FACE

Upper Lip & Chin	£55
Upper Lip	£35
Chin	£40
Centre Brow	£25
Full Face ex. Neck	£80
Full Face inc. Neck	£100

### ARMS

Fingers	£26
Hands & Fingers	£40
Underarms	£45
Arm	£110
Full Arm	£130
Shoulders	£60

### BIKINI

Regular	£60	+ UNDERARMS £90	+ UNDERARMS & UPPERLIP £110
Extended	£70	£95	£115
Brazilian ex. Rear	£80	£105	£125
Hollywood	£90	£115	£135
Section on Thigh	£65		
Buttock Centre Line	£40		
Buttock & Cheek	£75		

### LEGS

Feet & Toes	£40
Lower Leg exc. Knee	£130
Lower Leg inc. Knee	£140
Thigh ex. Knee	£140
Thigh inc. Knee	£150
Full Leg (now inc. Regular Bikini)	£200

## MENS

Hands or Feet	£50
Full Chest	£90
Stomach	£70
Back ½	£130
Full Back	£160
Shoulders	£70
Neck	£85
Full Face ex. Neck	£90
Full Face inc. Neck	£115

Prices shown are per session.

## VENUS SWAN

Radio Frequency & magnetic pulse non-invasive pain free aid for inch Loss, Skin Tightening, Cellulite Reduction and Anti-ageing. Sessions may vary depending on the severity of patients case. Maintenance sessions are not included in the prices below.

Venus Facial	£89
Venus Face & Neck	£95
Face Top Up	£65
Face & Neck Top Up	£75
Block Face (includes 8)	£700
Block Face & Neck (includes 8)	£750
Back Thigh/ Buttock	£100
Thigh Front/Inner	£85
Stomach	£90
Upper Arm	£75

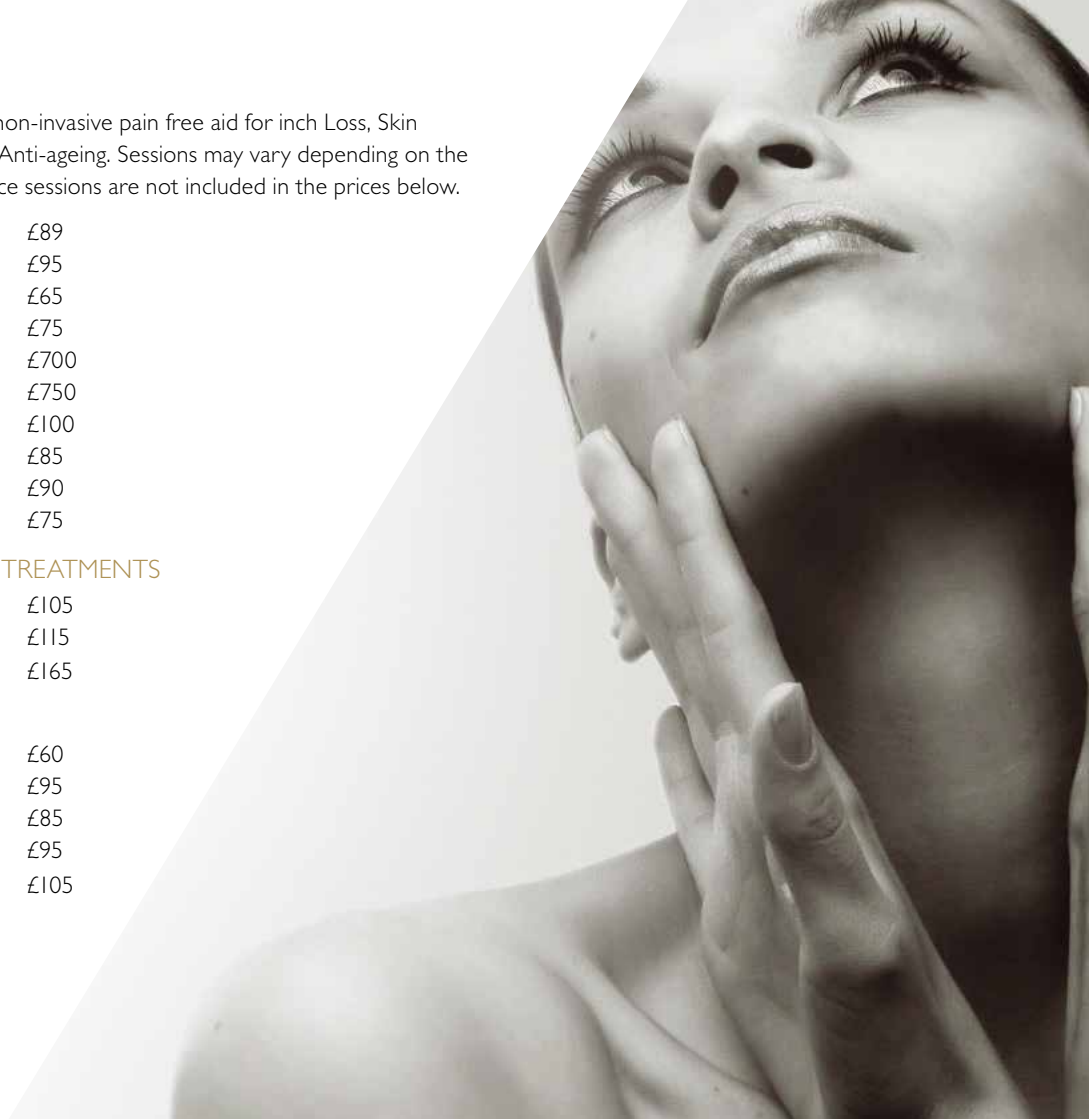
## SKIN REJUVENATION & ACNE TREATMENTS

Face	£105
Face & Neck	£115
Face, Neck & T Chest	£165

## FACIAL THREAD VEINS

Base Nose	£60
Cheeks	£95
Chin	£85
Forehead	£95
Base Nose & Cheeks	£105

*Prices shown are per session.*



## CLIENTS GUIDE

All clients are fully assessed for suitability prior to treatment. Our technicians are fully trained and certified in the use of the systems and in the treatments which they perform. All information given during consultation remains confidential.

## PRIVACY AND DIGNITY OF CLIENTS

All consultations prior to treatment are undertaken in a private environment, where all clients can feel secure while discussing personal matters. Clients are permitted to change in private when preparing for treatments.

## CANCELLATION POLICY

Failing to cancel your appointment at least 36 hours before will result in a 50% charge of the treatment costs. No shows will be charged 90% of the treatment costs.

All prices are excluding GST.

9 CHARING CROSS ST HELIER JERSEY JE2 3RP

T. 01534 722001 E. INFO@ELLIPSE.JE

WWW.ELLIPSE.JE

